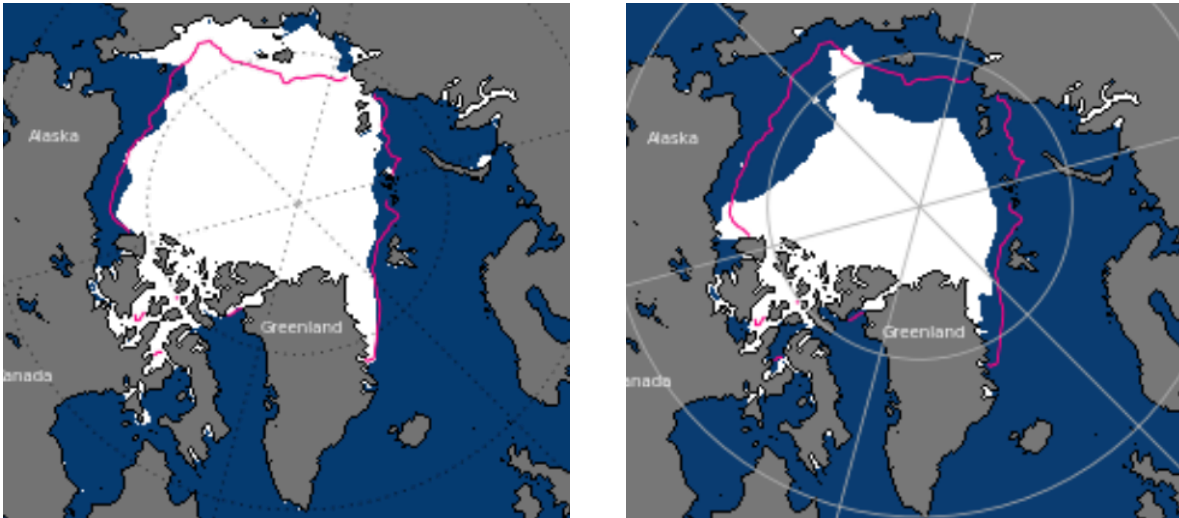


1.2 Expressing Ideas and Questions Tool: What do *you* think is happening to Arctic sea ice?

These two pictures show ice that covers the sea on the Earth's north pole. Each picture is from the same month 36 years apart. Look at the images and write your ideas about what is happening to Arctic sea ice.

September 1979  September 2018



Image/photo courtesy of the National Snow and Ice Data Center, University of Colorado, Boulder

Your ideas. There is less ice in 2018 than in 1979. Why do you think that there is less ice, even though it is the same time of year?

Your Questions. What questions do you have about why there was less ice in 2018 than in 1979?
